

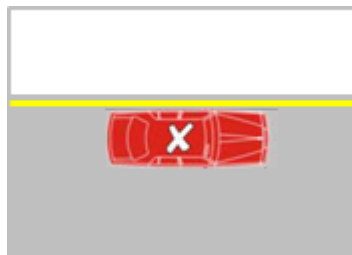
Parking Safely & Correctly

On-Street Parking

It has recently been brought to Council's attention there are parking issues occurring in residential streets. Therefore for your reference and to improve the situation please see below some common Australia Road Rules which refer to parking on-street legally, safely and appropriately.

Continuous Yellow Line

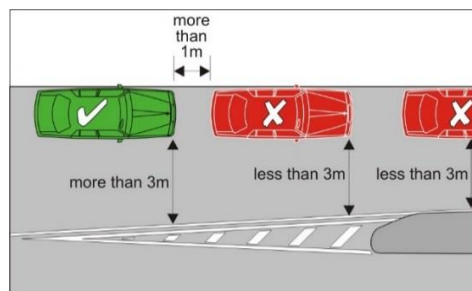
A driver must not stop on a length of road or in an area to which a continuous yellow line applies.



Australian Road Rule 169

Parallel Parking

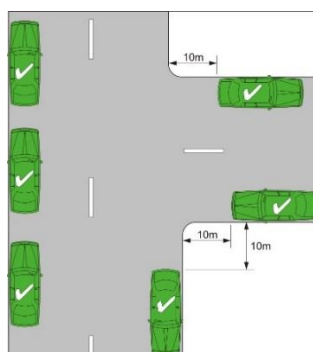
If the road has a continuous dividing line/dividing strip, the driver must position the vehicle at least **3 metres** from the continuous line or strip, unless indicated by information on or with a parking control sign. This means that if you cannot leave at least **3 metres** between your vehicle and the continuous line/strip you are parked illegally. This applies whether it is a line along the center of the road or if it is part of a traffic control device, island and/or median.



Australian Road Rule 208

Un-Signalised Intersection/Junction

A driver must not stop on a road within **10 metres** from the nearest point of an intersecting road at an intersection/junction without traffic lights



Australian Road Rule 170

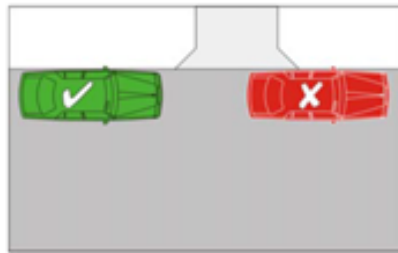
Parking Safely & Correctly

On-Street Parking

Obstructing a Driveway

A driver must not stop on or across a driveway or other way of access for vehicles travelling to or from adjacent land unless –

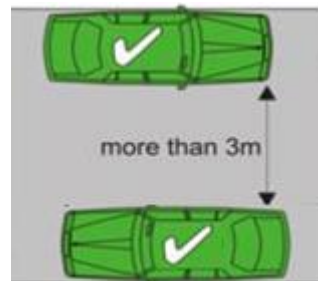
- Is dropping off or picking up passengers;
- Does not leave the vehicle unattended; and
- Completes the dropping off or picking up of the passengers and drives on as soon as possible and in any case, within **2 minutes** after stopping.



Australian Road Rule 198

Parking Abreast

If the road does not have a continuous dividing line or dividing strip, the driver must position the vehicle so there is at least **3 metres** of the road alongside the vehicle that is clear for other vehicles to pass.



Australian Road Rule 208

Adhering to parking regulations helps keep drivers and pedestrians safe. This information sheet illustrates several parking issues that have been highlighted within the City of Marion, It also describes relevant legislation.

The above referenced road rules are a legal requirement for all motorists and are enforceable by both Council and South Australian Police.

Please park correctly and safely.